

OXY-FUEL CATALOG

CATALOGS FOR PLASMA, LASER AND MIG/MAG/TIG CUTTING ARE AVAILABLE ON WWW.THERMACUT.COM

A PROGRESSIVE COMPANY FOR AN EVOLVING MARKET

Over a period of 28 years, the THERMACUT Group has undergone a multitude of changes. THERMACUT (originally Tatra Imports Inc.) was incorporated in Claremont, New Hampshire in 1990 and sold products under the brand ZAP Plasmatherm, a reseller of plasma consumables from local vendors directly to end-users. The company began operating with three employees, conducting business through telephone sales. In 1992, the company opened a small manufacturing facility in the Czech Republic, followed by a sales office there in 1996. The Czech facility was created to produce and sell plasma consumables and torches directly into the Eastern European market and through distributors in Western Europe under the brand name THERMACUT, utilizing both inside and outside sales representatives. And in 1993 the THERMACUT brand was introduced into North America and sold through distributors.

In January of 1999, STK Gesellschaft für Schweißtechnik GmbH (a holding company 100% owned by the IBG Group of Cologne, Germany) purchased 80% of the shares of THERMACUT and in 2002 completed the acquisition to become the 100% shareholder of the THERMACUT Group.

Since those early and humble beginnings, THERMACUT has evolved into a major force in providing plasma torches and consumables through multiple sales channels supported by ten sales subsidiaries. THERMACUT also has a close partnership with Abicor-Binzel (an IBG owned company) with locations in India, the Middle East, Turkey, Belarus, Kazakhstan, Denmark, Norway, Sweden, Finland, United Kingdom, South Korea, Australia, Mexico, and Brazil. Based on customer demand, THERMACUT has also introduced TIG/WIG, MIG/MAG and Oxy-fuel products and produces those products at its modern ISO 9001 production facility located in Uherske Hradiste in the Czech Republic.

The THERMACUT Group has focused its efforts on providing high quality, direct replacement consumable and torch product lines that will meet or exceed the expectations of our valued customers who are cutting and welding metals thermally throughout the world. As our customer base grew, their expectations and demands also increased. In 2005, THERMACUT expanded its product portfolio with the addition of advanced consumables, which have included products such as the Silver Plus™, Silver Pro™ and Silver-EX® electrodes, plus the patented Tungsten-EX™ nozzles.

By 2013, the THERMACUT Group continued to expand and evolve in the thermal cutting and welding marketplace. In December of 2012, the THERMACUT Group concluded the purchase of the HOLMA® AG, a producer of premium quality laser consumables, which satisfies ongoing requests from customers for a high quality laser consumable brand and a further expansion of THERMACUT's plasma cutting and oxy-fuel consumable product portfolio.

In September 2013 at the SCHWEISSEN & SCHNEIDEN Exposition, the THERMACUT Group evolved once again with the introduction of a line of plasma cutting systems for both manual and mechanized plasma processes up to 65 mm thickness. The initial introduction featured a 105 amp system. THERMACUT also had 65 and 85 amp systems on display. With this change, THERMACUT has made clear to its customers around the world its intention to move into the position of a producer of a full range of original plasma products.

From 2016 to 2018, plasma power sources from 30 A to 125 A were gradually introduced. The HD series, along with its original torches and the patented Torch Connection System (TCS) connector, was launched in 2017 at SCHWEISSEN & SCHNEIDEN in Dusseldorf.

As with plasma cutting, THERMACUT is the leader in the field of laser cutting technology. In 2017 at SCHWEISSEN & SCHNEIDEN, we presented the original EX-TRABEAM® laser head, which was launched in the second half of 2018.

Throughout the life of the THERMACUT Group, we have believed that "The customer is always right." This is what motivates us to improve in all areas, starting with the development of all products and ending their sales.

"THE CUTTING COMPANY" is not just a slogan for us. It is an established practice. Join THERMACUT in the world of cutting to discover new and alternative applications, and take full advantage of new possibilities offered by the digital cutting world.

ADDRESSES AND CONTACTS

CZECH REPUBLIC

THERMACUT, k.s.
Headquarters and Production
Sokolovská 574, Mařatice
686 01 Uherské Hradiště
Tel.: +420 572 420 411
Fax: +420 572 420 420
E-mail: info@thermacut.cz
reditelstvi@thermacut.cz
www.thermacut.cz

CZECH REPUBLIC

THERMACUT, k.s.
Central Sales Department
Dukelská 76A
742 42 Šenov u Nového Jičína
Tel.: +420 556 423 418, 440
E-mail: sales@thermacut.cz
obchod@thermacut.cz
www.thermacut.cz

GERMANY

THERMACUT GmbH
Essener Str. 1
D-57234
Wilnsdorf
Tel.: +49 2739-4033-0
Fax: +49 2739 4033 77
E-mail: info@thermacut.de
www.thermacut.de

USA

THERMACUT, Inc
153 Charlestown Road
Claremont, NH 03743
Tel.: +1 (800) 932-8312
+1 (603) 543-0585
Fax: +1 (800) 972-6255
+1 (603) 542-2867
E-mail: sales@thermacut.com
www.thermacut.com

SUBSIDIARIES

CROATIA

THERMACUT CROATIA d.o.o.
Daničićeva 12
532 70 Senj
Tel.: +385 53 882 599
Fax: +385 53 882 622
E-mail: thermacut@gs.t-com.hr

HUNGARY

THERMACUT HUNGÁRIA Kft.
Petőfi Sándor utca 37 atd.
2500 Esztergom
Tel.: +36 33 502 090,1
Fax: +36 33 400 004
E-mail: info@thermacut.hu
www.thermacut.hu

CHINA

TMT (Shanghai) Cutting and Welding
Equipment Co., Ltd.
Room 206 2/F, B Block, Eternal Asia Plaza,
No. 3333 Shenjiang Road, Shanghai
Post: 201206
Tel.: 021-50390667
Fax: 021-50390677
E-mail: thermacut@weldstone.cn

JAPAN

Thermacut Japan Ltd.
3F Shin-Osaka Hankyu Building
1-1-1, Miyahara, Yodogawa-ku, Osaka
532-0003 Japan
Mob.: +81 (0)80 4738 9752
Tel.: +81 (0)6 7662 8857
Fax: +81 (0)6 7668 8301
E-mail: s.miura@thermacut.jp

SUBSIDIARIES

POLAND

THERMACUT-POLAND Sp. z o.o.
ul. Stawowa 20
43-400 Cieszyn
Tel.: +48 33 852 39 71
Tel./Fax: +48 33 852 13 34
E-mail: thermacut@pro.onet.pl
www.thermacut.pl

ROMANIA

THERMACUT ROMANIA SRL
B-dul 1 Decembrie 1918
nr. 127A
540445 Targu Mures,
Jud. Mures
Tel.: +40 265 263 205
Fax: +40 265 250 317
E-mail: office@thermacut.ro
www.thermacut.ro

RUSSIA

ООО "ТЕРМАКАТ"
454048Г. ЧЕЛЯБИНСК
УЛ. КИРОВОГРАДСКАЯ Д.2
Тел./факс: +7 351 211 08 15

ФИЛИАЛЫ

129343 Г. МОСКВА
УЛ. УРЖУМСКАЯ Д.4
Тел.: +7 495 778 42 10

630032 Г. НОВОСИБИРСК
УЛ. СТАНЦИОННАЯ 60/1, ОФИС 116
Тел.: +7 383 375 07 90

E-mail: info@thermacut.ru
www.thermacut.ru

SLOVAKIA

THERMACUT SLOVAKIA, s.r.o.
M. R. Štefánika 14
942 01 Šurany
Mob.: +421 190 3644954
Tel.: +421 356 501516-7
Fax: +421 356 501518
E-mail: obchod@thermacut.sk
www.thermacut.sk

UKRAINE

ООО "Термакат Украина ГмбХ"
ул. Петропавловская 24
с. Петропавловская Борщаговка
Киево-Святошинский р-н 08130
Моб. тел.: +380 50 336 33 91
Тел./факс: +380 44 403 16 99
E-mail: info@thermacut.ua
www.thermacut.ua

SALES COOPERATION WITH ABICOR-BINZEL

AUSTRALIA

Binzel PTY Ltd.
42 Hinkler Road
Mordialloc
Victoria 3195
Tel.: +61 (0)3 9587 8522
Fax: +61 (0)3 9580 8796
E-mail: sales@thermacut.com.au

BELARUS

IOOO «ABICOR BINZEL Technics»
ul. Timirjazeva 97-10
BY-220020 Minsk
Tel.: +375 29 5 800 300
E-mail: info@thermacut.by

BRAZIL

BINZEL DO BRASIL INDUSTRIAL Ltda
Estrada União e Indústria, Km 15,5-Lt 17,
Pedro do Rio,
Petrópolis - Rio de Janeiro, CEP 25750-226
Tel.: +55 (24) 2222-9799
+55 (24) 2222-9789
Mob.: +(24) 98134-2676
Fax: +55 (24) 2222-9789
E-mail: thermacut@thermacut.com.br
www.thermacut.com.br

DENMARK

Abicor Binzel A/S Denmark
Ringugngsgatan 4
SE-216 16 Limhamn
Tel.: 0045-43621633
Fax: 0045-43622324
E-mail: ac@binzel.se, ket@binzel.se
www.binzel-abicor.com

FINLAND

ABICOR BINZEL Finland Oy
Kartanontie 53
28430 Pori
Tel.: +358 2 634 4600
Fax: +358 2 634 4650
E-mail: info@binzel.fi

FRANCE

THERMACUT FRANCE
6 Rue des Frères Lumiere
67201 Eckbolsheim
Tel.: +33 3 88 76 58 75
E-mail: thermacut@thermacut.fr
www.thermacut.fr

GREAT BRITAIN

Abicor Binzel UK Ltd
Binzel House,
Mill Lane
Winwick Quay
Warrington,
WA2 8UA,Cheshire
Tel.: +44 1925 653944
Fax: +44 1925 654861
E-mail: info@abimail.co.uk
www.binzel-abicor.co.uk

INDIA

ABICOR BINZEL TECHNOWELD PVT LTD
SNo: 297, Indo German Technology park
Urawade
Mulshi
Pune- 412 115
Phone: 020-66743914, 020-39502691
E-mail: commercial@abicor-india.com

KAZAKHSTAN

THERMACUT
Республика Казахстан.
010000, г. Астана
пр. Республики 68, БЦ «Маржан» офис 116
Моб.: +7 777 826 4242
Тел.: +7 717 262 5730
E-mail: info@thermacut.com.kz
www.thermacut.kz

SALES COOPERATION WITH ABICOR-BINZEL

MEXICO

BINZEL MEXICO S.A. de C.V.
C. Municipio de Tepezalá No. 109
de Arteaga No. 102
Valle de Ags., C.P. 20358
San Fco. de los Romo, Ags.
Tel.: +52 (449) 1581765
Fax: +52 (449) 9731388
E-mail: info@thermacut.com.mx
www.thermacut.com.mx

NORWAY

Binzel Norge AS
Industriveien 6
N-3300 Hokksund
Tel.: 0047-32 25 19 90
E-mail: post@binzel.no

SOUTH KOREA

Abicor Binzel Korea Ltd.
#A-101, 263, Gaejwa-ro
Guemjeong-gu
Busan
Tel.: 0082 (31) 732 6065 / 6066 / 6067
Fax: 0082 (31) 732 6064
E-mail: don.kim@binzel.kr

SWEDEN

Alexander Binzel AB
Ringugngsgatan 4
S-21616 Limhamn
Tel.: 0046- 40 6 991 750
Fax: 0046- 40 6 991 770
E-mail: order@binzel.se

TURKEY

ABICOR BINZEL Kaynak Teknik
Ticaret LTD. STI.
Girne Mah. Irmak Sok. Küçükyalı İş Merkezi E
Blok
No:72-6E PK:34852
Maltepe İstanbul Türkiye
Tel.: +90 (216) 367 90 00
Fax: +90 (533) 367 90 14
E-mail: info@thermacuttr.com,
info@binzel-abicor.com.tr
www.thermacut.com.tr

UNITED ARAB EMIRATES

ABICOR BINZEL MIDDLE EAST FZE
P.O Box: 86026, WFZ-04/27, RAKIA Freezone,
Jazeera al Hamra
Ras al Khaimah, United Arab Emirates
Mob.: +971 50 377 1348
Tel.: +971 (7) 2432355
Fax: +971 (7) 2432356
E-mail: info@binzel-abicor.ae

VIETNAM

Mai Anh Minh Co Ltd
No.17, Street 34, Binh Tri Dong B Ward, Binh Tan
District
VN-Hochiminh City
Tel.: 0084-8-3963 7797
Fax: 0084-8-3963 7684
E-mail: minh.mai@maianhminh.vn

TABLE OF CONTENTS

OXY-FUEL

MANUFACTURER	PAGE
REPLACEMENT PARTS SUITABLE FOR EX-TRAF LAME / EX-TRAF LAME PRO	8
ESAB® MODEL	9-10
GCE® MODEL	11
HARRIS® MODEL	12
MESSER® MODEL	13-16
TANAKA® MODEL	17
Revision History	18

THERMACUT

EX-TRAFLEAME

Description: Oxyfuel injector cutting torch in two versions which works with all kinds of fuel gases and cuts materials up to 300 mm.

The torch meets Norm ISO 5172.

1



Item	Part No.	Description, plate thickness	Packing
1.	A-2100-PM	Cutting Injector Torch PROPANE / NAT. GAS / MIXED FUEL GASES	1pc
	A-2100-A	Cutting Injector Torch ACETYLENE	1pc

CUTTING TORCH A-2100-PM USES 6290-VVC CONSUMABLES. CUTTING TORCH A-2100-A USES 6290-VAX CONSUMABLES.

EX-TRAFLEAME PRO

Description: Oxyfuel injector cutting torch in two versions which works with all kinds of fuel gases and cuts materials up to 300 mm.

PRO version reaches greater cutting speed and faster preheating.

The torch meets Norm ISO 5172.

1



Item	Part No.	Description, plate thickness	Packing
1.	A-1100-PM	Cutting Injector Torch PROPANE / NAT. GAS / MIXED FUEL GASES	1pc
	A-1100-A	Cutting Injector Torch ACETYLENE	1pc

CUTTING TORCH A-1100-PM USES GRICUT 9230 CONSUMABLES. CUTTING TORCH A-1100-A USES VADURA 9215 CONSUMABLES.

Last update of this page: 02/12/2019. See Revision history for details.

THERMACUT
THE CUTTING COMPANY

WWW.THERMACUT.CZ
TEL.: +420 556 423 418
SALES@THERMACUT.CZ

WWW.THERMACUT.DE
TEL.: +49 (0) 27 39 40 33 0
INFO@THERMACUT.DE

WWW.THERMACUT.COM
TEL.: 1-603-542-6715
CUSTOMERSERVICE@THERMACUT.COM

MOST THERMACUT PARTS ARE MADE FOR OR BY AN IBG COMPANY.

VALID FROM DECEMBER 2019 • PREVIOUS VERSION IS NO LONGER VALID. • © COPYRIGHT 2019 BY THERMACUT® CZECH REPUBLIC. ALL RIGHTS RESERVED.

THERMACUT® REPLACEMENT PARTS SUITABLE FOR ESAB® MODEL



PRODUCT BROCHURE WITH DETAILS AT
WWW.THERMACUT.COM

IPB-300L

Description: two-piece standard cutting tip for cutting up to 300 mm.

Gases: Oxygen – propane, natural gas, mixed gases.

Suitable for COOLJET-BIE™, BID™ and MULTIJET-BIF™ torch.



Item	Part No.	Ref. No.	Description, plate thickness	Packing
1.	A-1301	4.450.041	Cutting Tip 6-15mm	5pcs
	A-1271	4.450.042	Cutting Tip 15-25mm	5pcs
	A-1272	4.450.043	Cutting Tip 25-40mm	5pcs
	A-1273	4.450.044	Cutting Tip 40-60mm	5pcs
	A-1274	4.450.045	Cutting Tip 60-100mm	5pcs
	A-1286	4.450.046	Cutting Tip 100-200mm	5pcs
	A-1287	4.450.047	Cutting Tip 200-250mm	5pcs
	A-1288	4.450.048	Cutting Tip 250-300mm	5pcs
2.	A-1278	4.450.545	Heating Nozzle 3-200mm	1pc
	A-1289	4.450.546	Heating Nozzle 200-300mm	1pc
	A-1290	4.450.548	Heating Nozzle 250-300mm for mixed gases only	1pc

IPD-300L

Description: two-piece standard cutting tip for cutting up to 300 mm.

Gases: Oxygen – propane, natural gas, mixed gases.

Suitable for COOLJET-BIE™, BID™ and MULTIJET-BIF™ torch.



Item	Part No.	Ref. No.	Description, plate thickness	Packing
1.	A-1355	4.450.262	Cutting Tip 10-25mm	5pcs
	A-1356	4.450.263	Cutting Tip 25-50mm	5pcs
	A-1357	4.450.264	Cutting Tip 50-75mm	5pcs
	A-1358	4.450.265	Cutting Tip 75-100mm	5pcs
	A-1286	4.450.046	Cutting Tip 100-200mm	5pcs
	A-1287	4.450.047	Cutting Tip 200-250mm	5pcs
	A-1288	4.450.048	Cutting Tip 250-300mm	5pcs
	2.	A-1360	4.450.560	Heating Nozzle 3-100mm
A-1278		4.450.545	Heating Nozzle 100-200mm for propane only	1pc
A-1359		4.450.547	Heating Nozzle 100-200mm for mixed gases only	1pc
A-1289		4.450.546	Heating Nozzle 200-300mm for propane only	1pc
A-1290		4.450.548	Heating Nozzle 200-300mm for mixed gases only	1pc

Last update of this page: 02/07/2018. See Revision history for details.

THERMACUT®
 THE CUTTING COMPANY

WWW.THERMACUT.CZ
 TEL.: +420.556 423 418
 SALES@THERMACUT.CZ

WWW.THERMACUT.DE
 TEL.: +49 (0) 27 39 40 33 0
 INFO@THERMACUT.DE

WWW.THERMACUT.COM
 TEL.: 1-603-542-6715
 CUSTOMERSERVICE@THERMACUT.COM

THERMACUT®, THE CUTTING COMPANY®, FHT-EX®, EX-TRAFIRE®, EX-TRACK® AND EX-TRABEAM® ARE REGISTERED TRADEMARKS OF THERMACUT, K.S. AND MAY BE REGISTERED IN CZECH REPUBLIC AND/OR OTHER COUNTRIES. ALL OTHER TRADEMARKS ARE PROPERTIES OF THEIR RESPECTIVE OWNERS. THERMACUT IS NO WAY AFFILIATED WITH ESAB®. MOST THERMACUT PARTS ARE MADE FOR OR BY AN IBG COMPANY.

VALID FROM DECEMBER 2019 • PREVIOUS VERSION IS NO LONGER VALID. • © COPYRIGHT 2019 BY THERMACUT® CZECH REPUBLIC. ALL RIGHTS RESERVED.

THERMACUT® REPLACEMENT PARTS SUITABLE FOR ESAB® MODEL



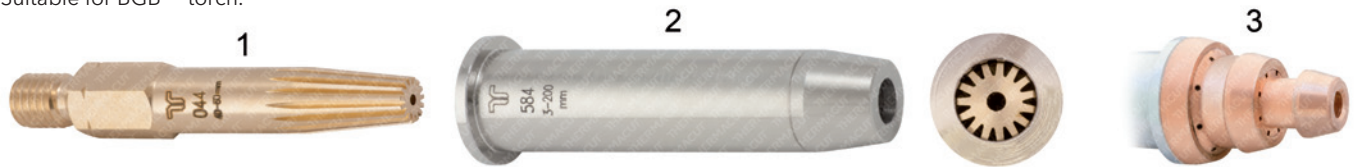
PRODUCT BROCHURE WITH DETAILS AT
WWW.THERMACUT.COM

GPB-300L

Description: two-piece standard cutting tip for cutting up to 300 mm.

Gases: Oxygen – propane, natural gas, mixed gases.

Suitable for BGB™ torch.



Item	Part No.	Ref. No.	Description, plate thickness	Packing
1.	A-1301	4.450.041	Cutting Tip 6-15mm (Part suitable for OEM set 4.450.091)*	5pcs
	A-1271	4.450.042	Cutting Tip 15-25mm (Part suitable for OEM set 4.450.092)*	5pcs
	A-1272	4.450.043	Cutting Tip 25-40mm (Part suitable for OEM set 4.450.093)*	5pcs
	A-1273	4.450.044	Cutting Tip 40-60mm (Part suitable for OEM set 4.450.094)*	5pcs
	A-1274	4.450.045	Cutting Tip 60-100mm (Part suitable for OEM set 4.450.095)*	5pcs
	A-1286	4.450.046	Cutting Tip 100-200mm (Part suitable for OEM set 4.450.096)*	5pcs
	A-1287	4.450.047	Cutting Tip 200-250mm (Part suitable for OEM set 4.450.097)*	5pcs
	A-1288	4.450.048	Cutting Tip 250-300mm (Part suitable for OEM set 4.450.098)*	5pcs
2.	A-1312	4.450.584	Heating Nozzle 3-200mm (Part suitable for OEM set 4.450.091- 4.450.096)*	1pc
	A-1313	4.450.585	Heating Nozzle 200-300mm (Part suitable for OEM set 4.450.097- 4.450.098)*	1pc
3.	A-1477	4.454.041	Mixer	1pc

* OEM SET CONTAINS ITEMS 1, 2 AND 3 TOGETHER AS A SET.



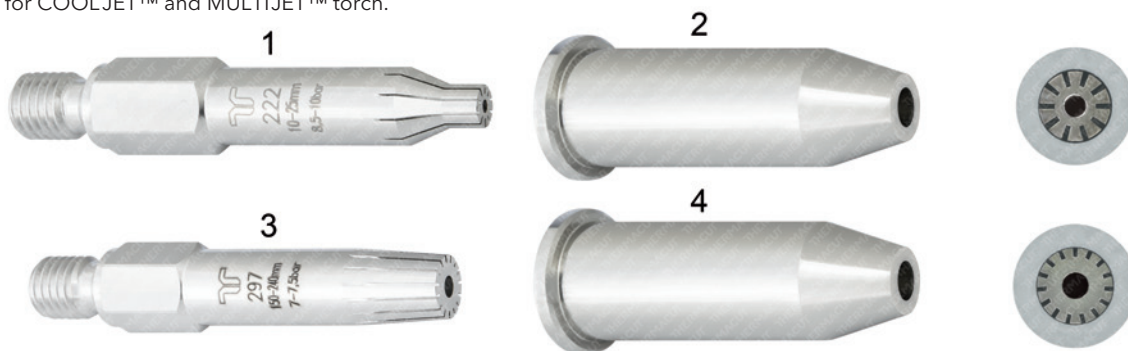
PRODUCT BROCHURE WITH DETAILS AT
WWW.THERMACUT.COM

IAC and IAD

Description: two-piece standard cutting tip for cutting up to 300 mm.

Gases: Oxy-Acetylene.

Suitable for COOLJET™ and MULTIJET™ torch.



Item	Part No.	Ref. No.	Description, plate thickness	Packing
1.	A-1346	4.450.222	IAC Cutting Tip 10-25mm	5pcs
	A-1347	4.450.223	IAC Cutting Tip 25-50mm	5pcs
	A-1348	4.450.224	IAC Cutting Tip 50-75mm	5pcs
	A-1349	4.450.225	IAC Cutting Tip 75-100mm	5pcs
	A-1350	4.450.226	IAC Cutting Tip 100-150mm	5pcs
2.	A-1341	4.450.526	IAC Heating Nozzle 3-150mm	1pc
3.	A-1351	4.450.297	IAD Cutting Tip 150-240mm	5pcs
4.	A-1342	4.450.591	IAD Heating Nozzle 150-300mm	1pc

Last update of this page: 06/06/2019. See Revision history for details.

THERMACUT®
 THE CUTTING COMPANY

WWW.THERMACUT.CZ
 TEL.: +420 556 423 418
 SALES@THERMACUT.CZ

WWW.THERMACUT.DE
 TEL.: +49 (0) 27 39 40 33 0
 INFO@THERMACUT.DE

WWW.THERMACUT.COM
 TEL.: 1-603-542-6715
 CUSTOMERSERVICE@THERMACUT.COM

THERMACUT®, THE CUTTING COMPANY®, FHT-EX®, EX-TRAFIRE®, EX-TRACK® AND EX-TRABEAM® ARE REGISTERED TRADEMARKS OF THERMACUT, K.S. AND MAY BE REGISTERED IN CZECH REPUBLIC AND/OR OTHER COUNTRIES. ALL OTHER TRADEMARKS ARE PROPERTIES OF THEIR RESPECTIVE OWNERS. THERMACUT IS NO WAY AFFILIATED WITH ESAB®. MOST THERMACUT PARTS ARE MADE FOR OR BY AN IBG COMPANY.

VALID FROM DECEMBER 2019 • PREVIOUS VERSION IS NO LONGER VALID. • © COPYRIGHT 2019 BY THERMACUT® CZECH REPUBLIC. ALL RIGHTS RESERVED.

THERMACUT® REPLACEMENT PARTS SUITABLE FOR GCE® MODEL

ASF

Description: two-piece standard cutting tip for cutting up to 150 mm.

Gases: Oxy-Acetylene.

Suitable for GCE® torch FIT+®



Item	Part No.	Ref. No.	Description, plate thickness	Packing
1.	A-1452	0769925	Cutting Tip 10-25mm	5pcs
	A-1443	0769926	Cutting Tip 25-40mm	5pcs
	A-1444	0769927	Cutting Tip 40-60mm	5pcs
	A-1445	0769928	Cutting Tip 60-100mm	5pcs
	A-1446	0769929	Cutting Tip 100-150mm	5pcs
2.	A-1447	0769932	Heating Nozzle 3-150mm	1pc

PSF

Description: two-piece standard cutting tip for cutting up to 100 mm.

Gases: propane, natural gas, mixed gases.

Suitable for GCE® torch FIT+®



Item	Part No.	Ref. No.	Description, plate thickness	Packing
1.	A-1488	0769915	Cutting Tip 15-25mm	5pcs
	A-1489	0769916	Cutting Tip 25-40mm	5pcs
	A-1490	0769917	Cutting Tip 40-60mm	5pcs
	A-1491	0769918	Cutting Tip 60-100mm	5pcs
	2.	A-1447	0769932	Heating Nozzle 3-150mm

Last update of this page: 02/12/2019. See Revision history for details.

THERMACUT®
THE CUTTING COMPANY

WWW.THERMACUT.CZ
TEL.: +420.556 423 418
SALES@THERMACUT.CZ

WWW.THERMACUT.DE
TEL.: +49 (0) 27 39 40 33 0
INFO@THERMACUT.DE

WWW.THERMACUT.COM
TEL.: 1-603-542-6715
CUSTOMERSERVICE@THERMACUT.COM

THERMACUT®, THE CUTTING COMPANY®, FHT-EX®, EX-TRAFIRE®, EX-TRACK® AND EX-TRABEAM® ARE REGISTERED TRADEMARKS OF THERMACUT, K.S. AND MAY BE REGISTERED IN CZECH REPUBLIC AND/OR OTHER COUNTRIES. ALL OTHER TRADEMARKS ARE PROPERTIES OF THEIR RESPECTIVE OWNERS. THERMACUT IS NO WAY AFFILIATED WITH GCE®. MOST THERMACUT PARTS ARE MADE FOR OR BY AN IBG COMPANY.
VALID FROM DECEMBER 2019 • PREVIOUS VERSION IS NO LONGER VALID. • © COPYRIGHT 2019 BY THERMACUT® CZECH REPUBLIC. ALL RIGHTS RESERVED.

THERMACUT® REPLACEMENT PARTS SUITABLE FOR HARRIS® MODEL



PRODUCT BROCHURE WITH DETAILS AT
WWW.THERMACUT.COM

6290-VVC

Description: two-piece high speed cutting tips for cutting up to 250 mm.

Gases: Oxygen - propane, natural gas.



Item	Part No.	Ref. No.	Description, plate thickness	Packing
1.	A-1159	6290-VVC5/0 OEM	Cutting Tip 1-4mm	1pc
	A-1160	6290-VVC4/0 OEM	Cutting Tip 4-6mm	1pc
	A-1161	6290-VVC3/0	Cutting Tip 6-9mm	1pc
	A-1162	6290-VVC2/0	Cutting Tip 9-12.5mm	1pc
	A-1163	6290-VVC0	Cutting Tip 12.5-20mm	1pc
	A-1164	6290-VVC01/2	Cutting Tip 20-35mm	1pc
	A-1165	6290-VVC1	Cutting Tip 35-60mm	1pc
	A-1166	6290-VVC11/2	Cutting Tip 60-75mm	1pc
	A-1167	6290-VVC2	Cutting Tip 75-125mm	1pc
	A-1168	6290-VVC21/2	Cutting Tip 125-150mm	1pc
	A-1169	6290-VVC3	Cutting Tip 150-175mm	1pc
	A-1170	6290-VVC4	Cutting Tip 175-200mm	1pc
	A-1171	6290-VVC5	Cutting Tip 200-225mm	1pc
	A-1172	6290-VVC51/2	Cutting Tip 225-250mm	1pc

THESE CONSUMABLES ARE SUITABLE FOR EX-TRAFLEME TORCH.

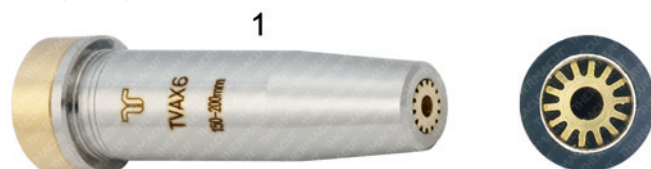


PRODUCT BROCHURE WITH DETAILS AT
WWW.THERMACUT.COM

6290-VAX

Description: two-piece high speed cutting tips.

Gases: Oxy-Acetylene.



Item	Part No.	Ref. No.	Description, plate thickness	Packing
1.	A-1304	6290-VAX1 OEM	Cutting Tip 0-8mm	1pc
	A-1305	6290-VAX2	Cutting Tip 8-15mm	1pc
	A-1306	6290-VAX3	Cutting Tip 15-35mm	1pc
	A-1307	6290-VAX4	Cutting Tip 35-75mm	1pc
	A-1308	6290-VAX5	Cutting Tip 75-150mm	1pc
	A-1309	6290-VAX6	Cutting Tip 150-200mm	1pc

THESE CONSUMABLES ARE SUITABLE FOR EX-TRAFLEME TORCH.

Last update of this page: 02/12/2019. See Revision history for details.

THERMACUT®
THE CUTTING COMPANY

WWW.THERMACUT.CZ
TEL.: +420 556 423 418
SALES@THERMACUT.CZ

WWW.THERMACUT.DE
TEL.: +49 (0) 27 39 40 33 0
INFO@THERMACUT.DE

WWW.THERMACUT.COM
TEL.: 1-603-542-6715
CUSTOMERSERVICE@THERMACUT.COM

THERMACUT®, THE CUTTING COMPANY®, FHT-EX®, EX-TRAFIRE®, EX-TRACK® AND EX-TRABEAM® ARE REGISTERED TRADEMARKS OF THERMACUT, K.S. AND MAY BE REGISTERED IN CZECH REPUBLIC AND/OR OTHER COUNTRIES. ALL OTHER TRADEMARKS ARE PROPERTIES OF THEIR RESPECTIVE OWNERS. THERMACUT IS NO WAY AFFILIATED WITH HARRIS®. MOST THERMACUT PARTS ARE MADE FOR OR BY AN IBG COMPANY.

VALID FROM DECEMBER 2019 • PREVIOUS VERSION IS NO LONGER VALID. • © COPYRIGHT 2019 BY THERMACUT® CZECH REPUBLIC. ALL RIGHTS RESERVED.

THERMACUT® REPLACEMENT PARTS SUITABLE FOR MESSER® MODEL



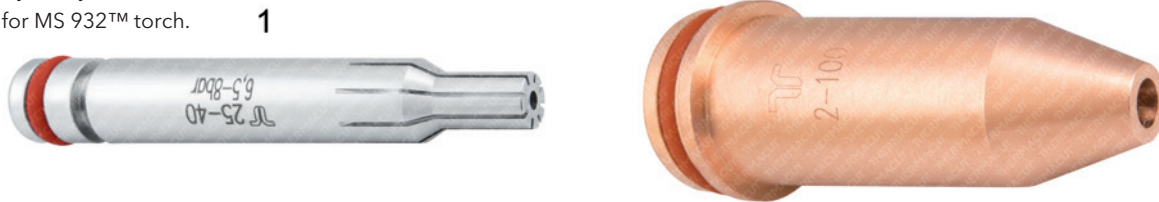
PRODUCT BROCHURE WITH DETAILS AT
WWW.THERMACUT.COM

VADURA® 9215A

Description: two-piece standard cutting tip for cutting up to 300 mm.

Gases: Oxy-Acetylene.

Suitable for MS 932™ torch.



Item	Part No.	Ref. No.	Description, plate thickness	Packing
1.	A-1369	716.16562	Cutting Tip 6-10mm	5pcs
	A-1370	716.16563	Cutting Tip 10-25mm	5pcs
	A-1362	716.16564	Cutting Tip 25-40mm	5pcs
	A-1371	716.16565	Cutting Tip 40-60mm	5pcs
	A-1372	716.16566	Cutting Tip 60-100mm	5pcs
	A-1373	716.16567	Cutting Tip 100-150mm	5pcs
	A-1374	716.16568	Cutting Tip 150-230mm	5pcs
	A-1375	716.16569	Cutting Tip 230-300mm	5pcs
	2.	A-1361	716.16550	Heating Nozzle 3-100mm
A-1367		716.16560	Heating Nozzle 100-300mm	1pc

THESE PARTS ARE NOT INTERCHANGEABLE WITH OEM. THERMACUT HEATING NOZZLE AND THERMACUT CUTTING TIP MUST BE USED TOGETHER AS THE SET. PARTS ARE DIFFERENT COMPARED TO OEM.

THESE CONSUMABLES ARE SUITABLE FOR EX-TRAFLEAME PRO TORCH.



PRODUCT BROCHURE WITH DETAILS AT
WWW.THERMACUT.COM

VADURA® 1215-A

Description: high-speed two-piece cutting tip for machine cutting.

Gases: Acetylene.

Suitable for MS 832™ torch.



Item	Part No.	Ref. No.	Description, plate thickness	Packing
1.	A-1230	716.15942	Cutting Tip 6-10mm	5pcs
	A-1060	716.15943	Cutting Tip 10-25mm	5pcs
	A-1061	716.15944	Cutting Tip 25-40mm	5pcs
	A-1062	716.15945	Cutting Tip 40-60mm	5pcs
	A-1063	716.15946	Cutting Tip 60-100mm	5pcs
	A-1064	716.15947	Cutting Tip 100-150mm	5pcs
	2.	A-1065	716.15950	Heating Nozzle 3-150mm

INTERCHANGEABLE WITH ASD™ CONSUMABLES FROM GCE®

Last update of this page: 02/12/2019. See Revision history for details.

THERMACUT®
THE CUTTING COMPANY

WWW.THERMACUT.CZ
TEL.: +420.556 423 418
SALES@THERMACUT.CZ

WWW.THERMACUT.DE
TEL.: +49 (0) 27 39 40 33 0
INFO@THERMACUT.DE

WWW.THERMACUT.COM
TEL.: 1-603-542-6715
CUSTOMERSERVICE@THERMACUT.COM

THERMACUT®, THE CUTTING COMPANY®, FHT-EX®, EX-TRAFIRE®, EX-TRACK® AND EX-TRABEAM® ARE REGISTERED TRADEMARKS OF THERMACUT, K.S. AND MAY BE REGISTERED IN CZECH REPUBLIC AND/OR OTHER COUNTRIES. ALL OTHER TRADEMARKS ARE PROPERTIES OF THEIR RESPECTIVE OWNERS. THERMACUT IS NO WAY AFFILIATED WITH MESSER®. MOST THERMACUT PARTS ARE MADE FOR OR BY AN IBG COMPANY.

VALID FROM DECEMBER 2019 • PREVIOUS VERSION IS NO LONGER VALID. • © COPYRIGHT 2019 BY THERMACUT® CZECH REPUBLIC. ALL RIGHTS RESERVED.

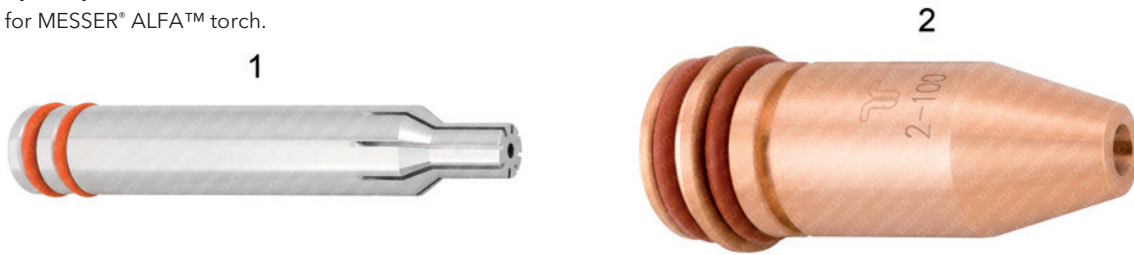
THERMACUT® REPLACEMENT PARTS SUITABLE FOR MESSER® MODEL

VADURA® 1217

Description: two-piece standard cutting tip for cutting up to 100 mm.

Gases: Oxy-Acetylene.

Suitable for MESSER® ALFA™ torch.



Item	Part No.	Ref. No.	Description, plate thickness	Packing
1.	A-1426	716.16543	Cutting Tip 10-25mm	5pcs
	A-1427	716.16544	Cutting Tip 25-40mm	5pcs
	A-1366	716.16545	Cutting Tip 40-60mm	5pcs
	A-1428	716.16546	Cutting Tip 60-100mm	5pcs
2.	A-1365	716.16320	Heating Nozzle 3-100mm	1pc

THESE PARTS ARE NOT INTERCHANGEABLE WITH OEM. THERMACUT HEATING NOZZLE AND THERMACUT CUTTING TIP MUST BE USED TOGETHER AS THE SET. PARTS ARE DIFFERENT COMPARED TO OEM.

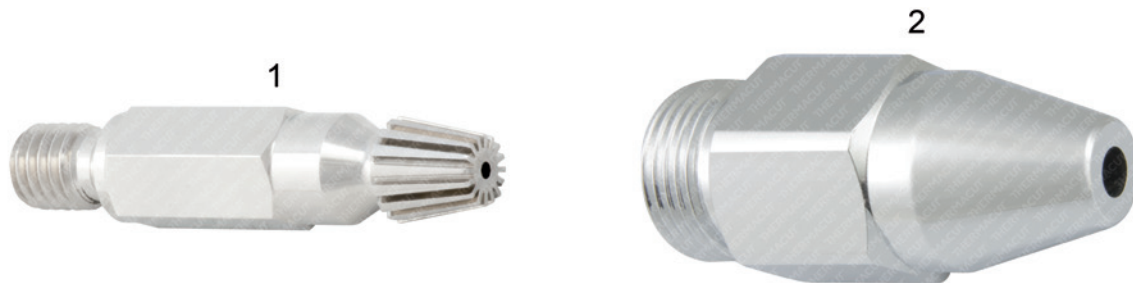
GRICUT® 1230-PMYE

PRODUCT BROCHURE WITH DETAILS AT
WWW.THERMACUT.COM

Description: two-piece standard cutting tip for cutting up to 100 mm.

Gases: Oxygen - propane, natural gas, mixed gases.

Suitable for MS 832™ torch.



Item	Part No.	Ref. No.	Description, plate thickness	Packing
1.	A-1282	716.15901	Cutting Tip 3-10mm	5pcs
	A-1283	716.15902	Cutting Tip 7-15mm	5pcs
	A-1235	716.15903	Cutting Tip 15-25mm	5pcs
	A-1236	716.15904	Cutting Tip 25-40mm	5pcs
	A-1237	716.15905	Cutting Tip 40-60mm	5pcs
	A-1238	716.15906	Cutting Tip 60-100mm	5pcs
2.	A-1281	716.15900	Heating Nozzle 3-100mm	1pc

INTERCHANGEABLE WITH PSD™ AND PHD™ CONSUMABLES FROM GCE®

Last update of this page: 28/03/2019. See Revision history for details.

THERMACUT®
THE CUTTING COMPANY

WWW.THERMACUT.CZ
TEL.: +420 556 423 418
SALES@THERMACUT.CZ

WWW.THERMACUT.DE
TEL.: +49 (0) 27 39 40 33 0
INFO@THERMACUT.DE

WWW.THERMACUT.COM
TEL.: 1-603-542-6715
CUSTOMERSERVICE@THERMACUT.COM

THERMACUT®, THE CUTTING COMPANY®, FHT-EX®, EX-TRAFIRE®, EX-TRACK® AND EX-TRABEAM® ARE REGISTERED TRADEMARKS OF THERMACUT, K.S. AND MAY BE REGISTERED IN CZECH REPUBLIC AND/OR OTHER COUNTRIES. ALL OTHER TRADEMARKS ARE PROPERTIES OF THEIR RESPECTIVE OWNERS. THERMACUT IS NO WAY AFFILIATED WITH MESSER®. MOST THERMACUT PARTS ARE MADE FOR OR BY AN IBG COMPANY.

VALID FROM DECEMBER 2019 • PREVIOUS VERSION IS NO LONGER VALID. • © COPYRIGHT 2019 BY THERMACUT® CZECH REPUBLIC. ALL RIGHTS RESERVED.

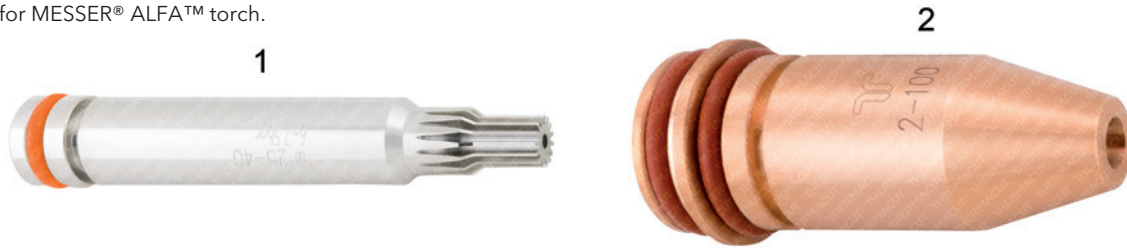
THERMACUT® REPLACEMENT PARTS SUITABLE FOR MESSER® MODEL

GRICUT® 1232

Description: two-piece standard cutting tip for cutting up to 300 mm.

Gases: Oxygen – propane, natural gas, mixed gases.

Suitable for MESSER® ALFA™ torch.



Item	Part No.	Ref. No.	Description, plate thickness	Packing
1.	A-1471	716.16321	Cutting Tip 3-10mm	5pcs
	A-1472	716.16322	Cutting Tip 7-15mm	5pcs
	A-1473	716.16323	Cutting Tip 15-25mm	5pcs
	A-1474	716.16324	Cutting Tip 25-40mm	5pcs
	A-1475	716.16325	Cutting Tip 40-60mm	5pcs
	A-1476	716.16326	Cutting Tip 60-100mm	5pcs
	A-1478	716.16327	Cutting Tip 100-200mm	5pcs
	A-1492	716.16328	Cutting Tip 200-250mm	5pcs
	A-1479	716.16329	Cutting Tip 250-300mm	5pcs
2.	A-1365	716.16320	Heating Nozzle 3-100mm	1pc
	A-1480	716.16340	Heating Nozzle 100-300mm	1pc

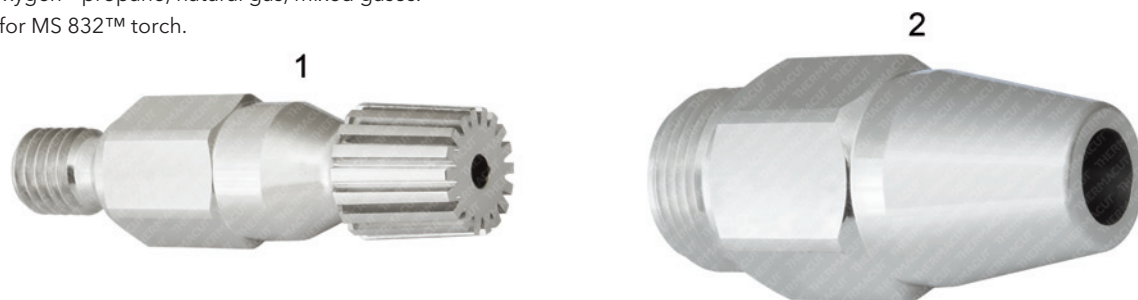
THESE PARTS ARE NOT INTERCHANGEABLE WITH OEM. THERMACUT HEATING NOZZLE AND THERMACUT CUTTING TIP MUST BE USED TOGETHER AS THE SET. PARTS ARE DIFFERENT COMPARED TO OEM.

GRICUT® 1280

Description: two-piece standard cutting tip for cutting above 100 mm.

Gases: Oxygen – propane, natural gas, mixed gases.

Suitable for MS 832™ torch.



Item	Part No.	Ref. No.	Description, plate thickness	Packing
1.	A-1337	716.15927	Cutting Tip 100-200mm	5pcs
	A-1338	716.15928	Cutting Tip 200-250mm	5pcs
	A-1339	716.15929	Cutting Tip 250-300mm	5pcs
2.	A-1340	716.15931	Heating Nozzle 100-300mm	1pc

INTERCHANGEABLE WITH PSD™ CONSUMABLES FROM GCE®

Last update of this page: 02/12/2019. See Revision history for details.

THERMACUT®
THE CUTTING COMPANY

WWW.THERMACUT.CZ
TEL.: +420.556 423 418
SALES@THERMACUT.CZ

WWW.THERMACUT.DE
TEL.: +49 (0) 27 39 40 33 0
INFO@THERMACUT.DE

WWW.THERMACUT.COM
TEL.: 1-603-542-6715
CUSTOMERSERVICE@THERMACUT.COM

THERMACUT®, THE CUTTING COMPANY®, FHT-EX®, EX-TRAFIRE®, EX-TRACK® AND EX-TRABEAM® ARE REGISTERED TRADEMARKS OF THERMACUT, K.S. AND MAY BE REGISTERED IN CZECH REPUBLIC AND/OR OTHER COUNTRIES. ALL OTHER TRADEMARKS ARE PROPERTIES OF THEIR RESPECTIVE OWNERS. THERMACUT IS NO WAY AFFILIATED WITH MESSER®. MOST THERMACUT PARTS ARE MADE FOR OR BY AN IBG COMPANY.

VALID FROM DECEMBER 2019 • PREVIOUS VERSION IS NO LONGER VALID. • © COPYRIGHT 2019 BY THERMACUT® CZECH REPUBLIC. ALL RIGHTS RESERVED.

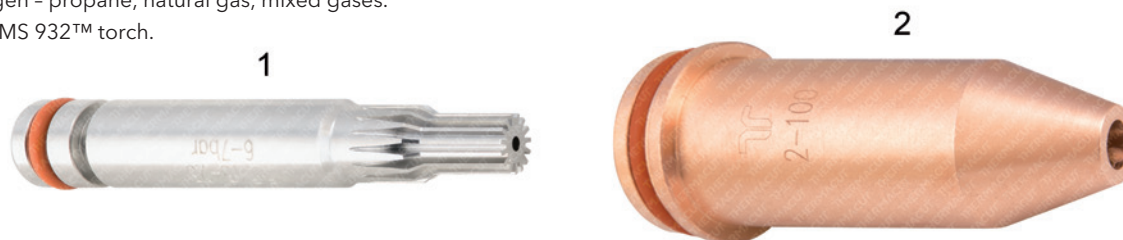
THERMACUT® REPLACEMENT PARTS SUITABLE FOR MESSER® MODEL

GRICUT® 9230

Description: two-piece standard cutting tip for cutting up to 300 mm.

Gases: Oxygen – propane, natural gas, mixed gases.

Suitable for MS 932™ torch.



Item	Part No.	Ref. No.	Description, plate thickness	Packing
1.	A-1456	716.16551	Cutting Tip 3-10mm	5pcs
	A-1457	716.16552	Cutting Tip 7-15mm	5pcs
	A-1458	716.16553	Cutting Tip 15-25mm	5pcs
	A-1459	716.16554	Cutting Tip 25-40mm	5pcs
	A-1460	716.16555	Cutting Tip 40-60mm	5pcs
	A-1461	716.16556	Cutting Tip 60-100mm	5pcs
	A-1484	716.16557	Cutting Tip 100-200mm	5pcs
	A-1485	716.16558	Cutting Tip 200-250mm	5pcs
	A-1486	716.16559	Cutting Tip 250-300mm	5pcs
2.	A-1361	716.16550	Heating Nozzle 3-100mm	1pc
	A-1367	716.16560	Heating Nozzle 100-300mm	1pc

THESE PARTS ARE NOT INTERCHANGEABLE WITH OEM. THERMACUT HEATING NOZZLE AND THERMACUT CUTTING TIP MUST BE USED TOGETHER AS THE SET. PARTS ARE DIFFERENT COMPARED TO OEM.

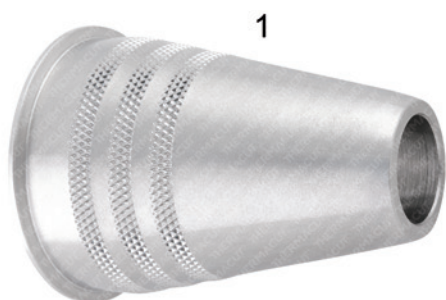
THESE CONSUMABLES ARE SUITABLE FOR EX-TRAFLEME PRO TORCH.

TORCH CAP

Description: Use for fixing of MESSER® ALFA™ consumables.

Gases: all.

Suitable for MESSER® ALFA™ torch.



Item	Part No.	Ref. No.	Description, plate thickness	Packing
1.	A-1434	716.11301	Torch Cap	1pc

FOR USE ONLY WITH TORCH WITHOUT INTEGRATED HIGH CONTROL.

Last update of this page: 02/12/2019. See Revision history for details.

THERMACUT®
THE CUTTING COMPANY

WWW.THERMACUT.CZ
TEL.: +420 556 423 418
SALES@THERMACUT.CZ

WWW.THERMACUT.DE
TEL.: +49 (0) 27 39 40 33 0
INFO@THERMACUT.DE

WWW.THERMACUT.COM
TEL.: 1-603-542-6715
CUSTOMERSERVICE@THERMACUT.COM

THERMACUT®, THE CUTTING COMPANY®, FHT-EX®, EX-TRAFIRE®, EX-TRACK® AND EX-TRABEAM® ARE REGISTERED TRADEMARKS OF THERMACUT, K.S. AND MAY BE REGISTERED IN CZECH REPUBLIC AND/OR OTHER COUNTRIES. ALL OTHER TRADEMARKS ARE PROPERTIES OF THEIR RESPECTIVE OWNERS. THERMACUT IS NO WAY AFFILIATED WITH MESSER®. MOST THERMACUT PARTS ARE MADE FOR OR BY AN IBG COMPANY.

VALID FROM DECEMBER 2019 • PREVIOUS VERSION IS NO LONGER VALID. • © COPYRIGHT 2019 BY THERMACUT® CZECH REPUBLIC. ALL RIGHTS RESERVED.

THERMACUT® REPLACEMENT PARTS SUITABLE FOR TANAKA® MODEL

TANAKA® 3051

Description: one-piece standard cutting tip for cutting up to 375 mm.

Gases: Oxygen - LPG.

1



Item	Part No.	Ref. No.	Description, plate thickness	Packing
1.	A-1462	3051-1	Cutting Tip 5-15mm	1pc
	A-1463	3051-2	Cutting Tip 10-25mm	1pc
	A-1464	3051-3	Cutting Tip 25-40mm	1pc
	A-1465	3051-4	Cutting Tip 40-80mm	1pc
	A-1466	3051-5	Cutting Tip 80-100mm	1pc
	A-1467	3051-6	Cutting Tip 100-225mm	1pc
	A-1468	3051-7	Cutting Tip 200-275mm	1pc
	A-1469	3051-9	Cutting Tip 300-375mm	1pc

Last update of this page: 19/12/2018. See Revision history for details.

THERMACUT®
THE CUTTING COMPANY

WWW.THERMACUT.CZ
TEL.: +420 556 423 418
SALES@THERMACUT.CZ

WWW.THERMACUT.DE
TEL.: +49 (0) 27 39 40 33 0
INFO@THERMACUT.DE

WWW.THERMACUT.COM
TEL.: 1-603-542-6715
CUSTOMERSERVICE@THERMACUT.COM

THERMACUT®, THE CUTTING COMPANY®, FHT-EX®, EX-TRAFIRE®, EX-TRACK® AND EX-TRABEAM® ARE REGISTERED TRADEMARKS OF THERMACUT, K.S. AND MAY BE REGISTERED IN CZECH REPUBLIC AND/OR OTHER COUNTRIES. ALL OTHER TRADEMARKS ARE PROPERTIES OF THEIR RESPECTIVE OWNERS. THERMACUT IS NO WAY AFFILIATED WITH TANAKA®. MOST THERMACUT PARTS ARE MADE FOR OR BY AN IBG COMPANY.
VALID FROM DECEMBER 2019 • PREVIOUS VERSION IS NO LONGER VALID. • © COPYRIGHT 2019 BY THERMACUT® CZECH REPUBLIC. ALL RIGHTS RESERVED.

REVISION HISTORY

EX-TRAFIRE / EX-TRAFIRE PRO SECTION - Revision on PAGE 8 - 02/12/2019 - New product line added.

GCE® SECTION - Revision on PAGE 11 - 02/12/2019 - System name added. Picture of part A-1447 changed.

GCE® SECTION - Revision on PAGE 11 - 02/12/2019 - New product line added.

HARRIS®, MESSER® SECTION - Revision on PAGES 12, 13, 16 - 02/12/2019 - Footnote added.

MESSER® SECTION - Revision on PAGE 15 - 02/12/2019 - Part A-1492 added to the table.

MESSER® SECTION - Revision on PAGE 13 - 09/07/2019 - Description of parts A-1230, A-1060, A-1061, A-1062, A-1063, A-1064 changed. Product description changed.

MESSER® SECTION - Revision on PAGE 16 - 09/07/2019 - Parts A-1484, A-1485, A-1486, A-1367 added to the table. Description changed.

MESSER® SECTION - Revision on PAGE 13 - 09/07/2019 - Parts A-1373, A-1374, A-1375, A-1367 added to the table. Description changed. Description of parts A-1369, A-1370, A-1362, A-1371, A-1372 changed.

MESSER® SECTION - Revision on PAGE 15 - 09/07/2019 - Parts A-1478, A-1479, A-1480 added to the table. Description changed.

ESAB® SECTION - Revision on PAGE 10 - 06/06/2019 - Ref. No. of part A-1477 changed.

INTRODUCTORY SECTION - Revision on PAGE 2 - 20/05/2019 - Introductory text updated.

MESSER® SECTION - Revision on PAGES 14, 15, 16 - 28/03/2019 - Footnote added.

INTRODUCTORY SECTION - Revision on PAGES 3, 6 - 28/02/2019 - Czech and United Arab Emirates contact informations changed.

HARRIS® SECTION - Revision on PAGE 12 - 28/02/2019 - Ref. No. of part A-1162 corrected.

MESSER® SECTION - Revision on PAGE 16 - 28/02/2019 - New product line TORCH CAP added.

MESSER® SECTION - Revision on PAGE 15 - 28/02/2019 - New product line GRICUT® 1232 added.

MESSER® SECTION - Revision on PAGE 13 - 28/02/2019 - Part A-1369 added to the table.

MESSER® SECTION - Revision on PAGES 13, 16 - 22/01/2019 - Compatibility note added.

TANAKA® SECTION - Revision on PAGE 17 - 19/12/2018 - New product line TANAKA® 3051 added.

MESSER® SECTION - Revision on PAGE 16 - 19/12/2018 - New product line GRICUT® 9230 added.

MESSER® SECTION - Revision on PAGE 14 - 19/12/2018 - New product line VADURA® 1217 added.